

GCSE

OPTIONS 2024



$$C = \pi d$$

A



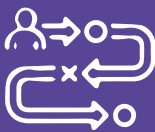
$$\vec{F} = m\vec{a}$$



RET

RUSSELL EDUCATION TRUST

Turing House
www.turinghouseschool.org.uk



CHOOSING YOUR SUBJECTS

The selection of optional subjects at Key Stage 4 (Years 10-11, with some courses beginning in Year 9) is one of the most important moments in your secondary education and has an impact on the rest of your life. This booklet is designed to explain the background to the choices available and provide a guide and reference point for the next stage.

Certain subjects are mandatory but the selection of optional subjects can be difficult, so it is important that students understand their own strengths and weaknesses, as well as those subjects for which they have a real aptitude and interest.

Turing House staff will support students throughout the process, looking objectively at aptitude and progress and giving guidance on the courses we would recommend for each individual, in order to optimise their chances of success.

What types of qualification are available?

There are two main types of qualification: 'GCSE' and 'Vocational'. The General Certificate of Secondary Education (GCSE) is primarily an exam-based qualification, which may include some coursework or practical work, depending on the nature of the subject. In addition, if you study a particular selection of GCSEs, these can form an English Baccalaureate which is covered in detail later.

Vocational qualifications result in a Level 2 qualification (which is equivalent to a GCSE). Examples of these are CNAT Sport and BTEC Travel and Tourism.

The final qualification is mainly based on coursework that takes place throughout the course but all Vocational courses

'Never regard study as a duty, but as the enviable opportunity to learn.'

ALBERT EINSTEIN

also feature an examined element.

Equivalent to a GCSE, a Level 2 qualification is graded as per table below. This type of qualification is mainly assessed through ongoing assessment rather than one terminal examination.

How does the grading system work?

The Government has introduced a programme of GCSE reform, and all GCSEs offered at Turing House School in Autumn 2019 will follow this new format which features a greater emphasis on spelling, punctuation and grammar.

Under the previous system, foundation and higher tier papers were available in many subjects to support students of different abilities but now all GCSE courses will be



more rigorous, demanding and challenging, and there are no tiered exam papers except in mathematics, science and modern foreign languages.

The grade scale for these new GCSEs now range from 9 to 1, with 9 being the highest and from 2018, this will apply to all GCSEs and Vocational qualifications.

Vocational Qualification	Old GCSE Grading	New 9 to 1 Grading
Level 2 Distinction*	A*	8/9
Level 2 Distinction	A	7
Level 2 Merit	B	6
Level 1 Pass	C	4/5
Level 1 Advanced Credit	D/E	2/3
Level 1 Credit	F/G	1/2

Making your choice of subjects

Turing House is a fully inclusive school and will offer a broad and balanced curriculum which is accessible to all. The options are varied and we aim to meet the needs and aspirations of our students. Students will study five core subjects and can choose another four.

Core Subjects - compulsory

All students will study the following five compulsory subjects:

■ ENGLISH LANGUAGE

■ ENGLISH LITERATURE

■ MATHEMATICS

■ **SCIENCE:** Either: a **Trilogy:** a combined course of Biology, Chemistry & Physics or **Triple Science:** three separate sciences

■ RELIGION & PHILOSOPHY

(this course has already started and will be examined May 2021)

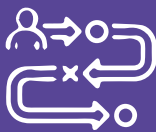
Turing House will also ensure that all students will study **Physical Education** and **Personal, Social, Health & Citizenship Education (PSHCE)** courses. These will not result in a qualification but are a vital part of our curriculum.

Additional Courses**

In addition to the Core subjects students will be asked to select four other subject choices that will be studied for two years and examined at the end of the course, in the summer of 2026. A student's choice of GCSE subjects will be determined by three important factors:

- Their ability and/or aptitude for all four subjects
- Their interest and enthusiasm for chosen subjects
- The relation of their chosen subjects to each other and their plans for higher education and a career

** We make every effort to offer these courses. However in the event we cannot recruit specialist teachers the courses will not run. This could also happen if only a small cohort of students opt for a course.



CHOOSING YOUR SUBJECTS

The English Baccalaureate Qualification (EBacc)

When choosing subjects, it is worth considering those that could form an English Baccalaureate (EBacc).

The EBacc is not a qualification in itself; it is a particular group of GCSE subjects which show a breadth of learning. Increasingly universities look favourably on someone who has this scope of knowledge as it provides a firm foundation for students' future success.

Our options process enables the majority of students to achieve the English Baccalaureate if they wish; to do so, they must gain a grade 5 or above in the following subjects:

- **English Mathematics**
- **Two sciences**
- **Geography or History**
- **Modern foreign language (Spanish)**

A language will be an advantage for most careers in the future and the top universities prioritise students who have an appropriate GCSE. This is one of the reasons why we encourage most students at Turing House to study a language.

We are aware that many of our students are bilingual and learn languages more easily. Some of our students have already been successful in securing GCSEs in German, Japanese and Greek!

Students do not need to have studied all of these subjects to go to university but having their GCSE options steered towards English Baccalaureate subjects will help to keep their choices open. Senior staff will guide students (and their parents) in making the right, fully-informed decisions to ensure that the most suitable courses are chosen.

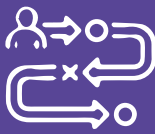
Tips for getting to university

The summary below gives an idea of some of the GCSE requirements that you might come across for certain degree courses. Remember that these are only examples. It is important to check university websites' detailed requirements before applying. You will be given intensive support during this process at Turing House.

- To study any degree at university, a student must have secured a grade 5 in both English and maths.
- Applicants to study medicine are required to have very good GCSE results in maths, science and English.
- Increasing numbers of universities require applicants to have a GCSE in a modern or classical language at grade 5 or above to be considered for any course.
- For a Business degree, a grade 5/6 in GCSE maths is required.
- A grade 5/6 in maths and science is often required for a degree in Psychology.

'Successful and unsuccessful people do not vary greatly in their abilities. They vary in their desires to reach their potential.'

JOHN MAXWELL



Pre-16 Qualifications & University Entrance

The following information is taken from a leaflet issued by the Russell Group, which provides guidance to students about how their GCSE subjects can affect their course choices at some universities:

- When applying to a university, and especially for a very competitive course at a competitive university, it is important that you consider all aspects of the entrance requirements, including the GCSE or other standard level requirements.
- Universities may ask for a specific number of GCSEs (or their equivalent). For example, a number of medical courses ask for five (sometimes more) top grades.
- GCSE English or another standard level equivalent is very often required at Grade 5 at least. At many universities this is a universal entry requirement for any course. Mathematics is only slightly less commonly asked for. Occasionally a university will require a foreign language for entry to any course, for example, University College London introduced such a requirement in 2012.
- For many courses, a grade 5 at least in GCSE English is needed, with Science and Engineering courses in particular often specifying this. Equally, courses such as Business and Psychology, which may attract applicants who aren't necessarily strong mathematicians, commonly ask for a grade 5 in mathematics and, in some cases, sciences.

'A university should be a place of light, of liberty, and of learning.'

BENJAMIN DISRAELI

- The GCSE or other standard level entrance requirements for individual degree courses are quite varied. In some cases, a particular subject or grade is required at standard level if it isn't being offered at advanced level. If you would like more information, the Senior Leadership team at Turing House will be happy to discuss how these points may affect the future choices of your son/daughter.



ASTRONOMY

Who is the course for? GCSE astronomy is for anyone who is interested in learning more about space, the solar system and the universe.

GCSE Astronomy is accessible to all students who are dedicated, enthusiastic about the universe and enjoy working in a mathematical way.

The course will enable students to understand our position in the Universe, the movements of planets and stars, the cycles in the night and daytime sky, and the way in which we use technology to observe and interact with space. Students will follow an incredible story of how scientists, from ancient civilisations to the modern day, have used their imagination and carefully recorded visual measurement to explore the Universe in which we live.

What will I study?

There are two main parts of the course that are assessed: **Naked eye astronomy** and **telescopic astronomy**:

In **Naked-eye Astronomy** you will study:

- Planet Earth
- The lunar disc
- The Earth-Moon-Sun system
- Time and the Earth-Moon-Sun cycles
- Solar System observation
- Celestial observation
- Early models of the Solar System
- Planetary motion and gravity

In **Telescopic Astronomy** you will study:

- Telescopic astronomy
- Exploring the Moon
- Solar astronomy
- Exploring the Solar System
- Formation of planetary systems
- Exploring starlight
- Stellar evolution
- Our place in the Galaxy
- Cosmology

How will I be assessed?

There are two written examinations each 1 hour and 45 minutes long.

■ PAPER 1: Naked eye astronomy

100 marks

■ PAPER 2: Telescopic Astronomy

100 marks

Each paper consists of a mixture of different question styles, including multiple-choice questions, short-answer questions and extended open response questions.

What will it give me?

GCSE Astronomy is a must for those considering a career or further study in the Physical Sciences, as an optional GCSE, it will show employers and colleges that you are dedicated to pursuing science at a higher level. The mathematical, practical and analytical skills gained through GCSE astronomy will not only support your further science education but strengthen your skillset needed for your core GCSE Science.

‘To confine our attention to terrestrial matters would be to limit the human spirit.’

STEPHEN HAWKING



OPTIONAL COURSE



BUSINESS

Who is the course for? Business is a dynamic subject, which prepares students for the challenges of adult life by introducing them to industry and the working world.

Whether pupils want to be an entrepreneur, a successful employee, a top manager for a thriving company, or just want an insight into how businesses work GCSE Business gives a powerful start to launch into various career paths.

Pupils studying business will not only gain knowledge and business acumen, but will also experience lessons based on business concepts, with professionalism, independence and productivity as our driving forces.

The courses offered emphasise the ever-changing nature of business, the challenge and creativity of enterprise and the reliance of businesses on effective communication.

What will I study?

The course is split into two themes, taking students from how entrepreneurs start businesses (Theme 1) through to growing and global businesses (Theme 2).

There are two equally weighted exam papers, focusing on each specification theme.

■ **Theme 1** concentrates on the key business concepts, issues and skills involved in starting and running a small business. It provides a framework for students to explore core concepts through the lens of an entrepreneur setting up a business.

■ **Theme 2** examines how a business develops beyond the start-up phase. It focuses on the key business concepts, issues and decisions used to grow a business, with an emphasis on aspects of marketing,

'If you think your teacher is tough, wait 'til you get a boss. He does not have tenure, so he tends to be a bit edgier. When you screw up, he's not going to ask you how you feel about it.'

BILL GATES (URBAN MYTH)

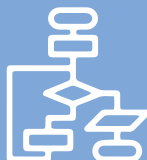
operations, finance and human resources. It also considers the impact of the wider world on the decisions a business makes as it grows

How will I be assessed?

- **Paper 1: Covering theme 1**, 90 minutes and 50% of the course
- **Paper 2: Covering theme 2**, 90 minutes and 50% of the course

What will it give me?

The qualification could provide a starting point for a route into employment in many of the diverse areas of business along with entry into further study of Business, Accounting and Economics in further education. Many past pupils have progressed to study Business at KS5 and University level.



OPTIONAL COURSE

COMPUTER SCIENCE

Who is the course for? The GCSE Computer Science course gets students working with real-world, practical programming techniques that give them a good understanding of what makes technology work.

Developed collaboratively with teachers, industry and the wider computer science community, the GCSE has built-in progression to further studies and is recognised as developing the skills that employers value.

What will I study?

GCSE Computer Science will encourage students to:

- understand what is meant by the terms data and information
- be able to describe the difference between a constant and a variable
- understand when to use constants and variables in problem-solving scenarios
- understand the different data types available to them. As a minimum, students should know about integer, Boolean, real, character and string data types and how these are represented in the programming language(s) they are using
- be able to explain the purpose of data types within code
- understand and be able to program with 1 and 2 dimensional arrays
- be able to use NOT, AND and OR when creating Boolean expressions and have experience in using these operators within coded solutions.

How will I be assessed?

The qualification is split into three components:

- **Computer systems (01);**
80 marks; 1 hour and 30 minutes.
Written paper (no calculators allowed);
50% of total GCSE

■ **Computational thinking, algorithms and programming (02);**

80 marks; 1 hour and 30 minutes.
Written paper (no calculators allowed);
50% of total GCSE

What will it give me?

Computer technology continues to advance rapidly and the way that technology is consumed has also been changing at a fast pace over recent years.

The growth in the use of mobile devices and web-related technologies has exploded, resulting in new challenges for employers and employees.

Businesses today require an ever-increasing number of technologically-aware individuals. This demand is greater in the gaming, mobile and web related industries and this specification has been designed with this in mind.

'I believe that at the end of the century the use of words and general educated opinion will have altered so much that one will be able to speak of machines thinking without expecting to be contradicted.'

ALAN TURING





OPTIONAL COURSE

DESIGN & TECHNOLOGY

Who is the course for? GCSE Design and Technology will prepare students to participate confidently and successfully in an increasingly technological world.

Students will gain awareness and learn from wider influences on Design and Technology including historical, social, cultural, environmental and economic factors.

Students will have the opportunity to work creatively when designing and making, and apply technical and practical expertise.

This GCSE allows students to study core technical, designing and making principles, including a broad range of design processes, materials, techniques and equipment. There will also be the opportunity to study specialist technical principles in greater depth.

What will I study?

In order to make effective design choices; students will need a breadth of core technical knowledge and understanding that consists of:

- **New and emerging technologies**
- **Energy generation and storage**
- **Developments in new materials**
- **Systems approach to designing**
- **Mechanical devices**
- **Materials and their working properties**

You will be encouraged to:

- Develop realistic design proposals as a result of the exploration of design opportunities and users' needs, wants and values
- Use imagination, experimentation and combine ideas when designing
- Develop the skills to critique and refine your own ideas whilst designing and making
- Communicate your design ideas and decisions using different media and techniques
- Develop decision making skills, including

'Creativity is allowing yourself to make mistakes. Design is knowing which ones to keep.'

SCOTT ADAMS

the planning and organisation of time and resources when managing your own project work

- Develop a broad knowledge of materials, components and technologies and practical skills to develop high quality, imaginative and functional prototypes

How will I be assessed?

- **WRITTEN EXAM:**
2 hours; 100 marks; 50% of GCSE
- **COURSEWORK:**
30–35 hours approximately on a substantial design and make task;
100 marks; 50% of GCSE

What will it give me?

This course is perfect preparation for further studies at A Level. It is the building block to understanding the design world, developing your designing and making skills.

The resulting a body of work will be an excellent resource to take to college, university and job interviews showing your planning, preparation, and decision making skills. You will apply scientific and mathematical approaches to problems, as well as the technical knowledge of materials needed.



OPTIONAL COURSE

DRAMA

Who is the course for? Do you want to watch and make new theatre? Can you challenge yourself physically and emotionally? Do you want to collaborate with other creative people?

In GCSE Drama you will explore the world of making theatre as a performer, director or designer. It is essential that you have a passion for this art form. Drama GCSE requires positive and productive collaborators who are willing to step out of their comfort zone. You are required to write about performances, play texts and analyse your own work - this is a heavy weighting of the GCSE marks. Your curiosity, commitment and collaboration are key to achieving on this GCSE course

What will I study?

■ In component 1, you will take part in a range of practical theatre lessons. From this you will develop your skills in team work, working to devise an original piece of drama to be performed in front of a live audience. Alongside this you will produce a 2000-word portfolio reflecting on the devising process.

■ Can you engage an audience with your acting or design choices? In component 2 you will perform or design two extracts from a play to an external visiting examiner. This is chance to be creative and develop your confidence.

■ In component 3, we will explore a full play text - DNA by Dennis Kelly. We will focus on choice made by actors, directors and designers when putting on a production of the show. This component will prepare you for part of your 1¾ hour written examination.

■ The second part of your written examination is a Live Theatre Review. For this, we will go to see a range of plays at the theatre, one of which you will analyse and answer questions on in the exam.

How will I be assessed?

- **COMPONENT 1: Devising**
40% of GCSE Grade (in Y10)
- **COMPONENT 2: Performance from a Text**
20% of GCSE Grade (in Y11)
- **COMPONENT 3: Theatre Makers in Practice**
40% of GCSE Grade (written exam in Y11)

What will it give me?

Drama builds the skills employers and universities want most. Students who study GCSE Drama are viewed as innovative, confident and successful people who can rise to any challenge and take highly sort after for jobs. GCSE Drama students are confident. They are team workers and good communicators; Drama students work under pressure to meet deadlines. Drama develops self-motivated individuals who can show initiative. Opting for Drama GCSE at KS4 provides you with a good progression route to more advanced qualifications including BTEC, A Level and Degree level. Step up to the challenge. Step into Drama.

‘There is a kind of invisible thread between the actor and the audience, and when it’s there it’s stunning, and there is nothing to match that.’

MAGGIE SMITH



Past



in

69

at

()

am
is
are

COMPULSORY SUBJECT

ENGLISH LANGUAGE

Who is the course for? All students will study the GCSE English Language course. This course will count towards Sixth Form entrance and there will be a minimum grade requirement in order to gain entry into the Sixth Form to study any subject.

The GCSE covers a range of reading, writing and speaking and listening skills, with the aim that students will read widely both as part of the course and around the subject.

Students will read a wide range of texts fluently and with good understanding, read critically and use knowledge gained from wide reading to inform and improve their own writing, using Standard English.

Students will also develop writing skills, using accurate spelling, punctuation and grammar, as well as a wide range of vocabulary and techniques within writing.

What will I study?

■ COMPONENT ONE:

Fiction and Imaginative Writing

Section A Reading: study and analyse selections from a range of prose fiction.

Section B Imaginative writing: explore and develop imaginative writing skills.

■ COMPONENT TWO:

Non-Fiction and Transactional Writing

Section A Reading: study and analyse selections from a range of non-fiction texts (including literary non-fiction).

Section B Transactional writing: explore and develop transactional writing skills, for example letters, articles, reports.

■ SPOKEN LANGUAGE

Students must demonstrate their presentation skills in a formal setting, listen and respond to questions and feedback, and use spoken English effectively.

'You can make anything by writing.'

CS LEWIS

How will I be assessed?

■ COMPONENT 1:

Written exam; 1 hour 45 minutes;
64 marks (40% of total GCSE)

■ COMPONENT 2:

Written exam; 2 hours;
96 marks (60% of total GCSE)

■ SPOKEN LANGUAGE:

Spoken assessment in the form of a presentation; graded Pass, Merit or Distinction (compulsory component but does not count towards GCSE grade)

What will it give me?

This course is excellent preparation for any written A level course that requires the skills of inference, understanding, explanation, analysis and evaluation. This in turn is perfect grounding for any similar degree course.

Employers and educators today consider English Language a vital and valuable qualification as it provides students with important written and verbal communication skills.





ENGLISH LITERATURE

Who is the course for? All students will study the GCSE English Literature Course.

This course will count towards Sixth Form entrance, taken as a secondary consideration to English Language GCSE results (apart from those who wish to study English Literature A-Level, for whom this will be a primary consideration).

The GCSE covers a range of texts and genres, from different time periods. Students will develop the ability to comprehend literature, both literally and inferentially, building their ability to analyse and evaluate texts.

Students will be able to write effectively about literature for a range of purposes, using accurate spelling, punctuation and grammar.

What will I study?

COMPONENT 1:

Shakespeare and Post-1914 Literature

- Study a Shakespeare play (likely to be 'Macbeth') and a post-1914 British play or novel (likely to be 'Journey's End').
- Develop skills to analyse how the language, form, structure and context of texts can create meanings and effects.
- Develop skills to maintain a critical style and informed personal response.

COMPONENT 2:

19th-century Novel and Poetry since 1789

- Study a 19th-century novel (likely to be 'Dr Jekyll and Mr Hyde') and a poetry collection from the Pearson Poetry Anthology.
- Develop skills to analyse how the language, form, structure and context of texts can create meanings and effects.
- Develop skills to maintain a critical style and informed personal response.
- Develop comparison skills.

**'Until I feared I would lose it,
I never loved to read. One
does not love breathing.'**

HARPER LEE

How will I be assessed?

Examinations at the of Year 11

■ COMPONENT 1:

Written exam; 1 hour 45 minutes;
80 marks (50% of total GCSE)

■ COMPONENT 2:

Written exam; 2 hours and 15 minutes;
80 marks (50% of total GCSE)

What will it give me?

This course will continue to build on the appreciation and love of literature which started through the study of texts in Key Stage 3.

Students will not only develop their ability to analyse and think critically, but will also be exposed to a huge range of historical and philosophical topics which provide the context for the literature we read.



FINE ART

Who is the course for? The GCSE in Fine Art is designed to be a general course encompassing a variety of areas of art and design.

Work produced for this qualification will demonstrate the use of the Art and Design formal elements and creative skills. The disciplines associated with the GCSE Art and Design are painting and drawing, printmaking, sculpture, mixed media and photography.

What will I study?

■ COMPONENT 1: Coursework

During the GCSE course, students will produce a portfolio of work that is assessed using the AQA assessment criteria.

Within this portfolio, they will complete three units of coursework, giving students an opportunity to explore the limitations of the materials on offer.

Initially the coursework units will be teacher led, but during the second and third controlled assessment projects, we would hope to see independence in our students as their artistic abilities develop.

■ COMPONENT 2: Externally set assignment

Students will be provided with an exam title supplied by the exam board after the Christmas break of Year 11.

Students will have from this date, until the Spring exam date, to produce a series of preparatory studies including a sketchbook and small final pieces, before sitting the exam.

How will I be assessed?

■ 60% of your grade will be assessed through your coursework - coursework includes all class work and homework tasks completed throughout Years 10 and 11. Students produce a quantity of work providing substantial evidence of studies undertaken during the course.

■ 40% of your grade will be assessed through an external examination. The examination is a timed test paper lasting 10 hours; students are given approximately 20 hours of preparation time in which to create a supporting portfolio.

What will it give me?

Students will gain a GCSE in a creative subject. The course encourages students to develop important skills in working independently and problem solving, as well as learning a broad variety of Art and Design techniques.

If you wish to work in a creative industry, the most common route is to take an A level in Art and Design and then proceed onto a one year foundation course before a degree.

Careers in art and design can span many different specialist areas, from fashion to interior design, photography and prop design to architecture or animation and art conservation.

'As practice makes perfect, I cannot but make progress; each drawing one makes, each study one paints, is a step forward.'

VINCENT VAN GOGH



OPTIONAL COURSE

FOOD & NUTRITION

Who is the course for? GCSE Food Preparation and Nutrition will equip students with an array of culinary techniques, as well as nutrition, food traditions and kitchen safety.

The focus for practical elements of the course is to ensure students develop a thorough understanding of nutrition, food provenance and the working characteristics of food materials.

Food preparation skills are integrated into five core topics:

- Food, nutrition and health
- Food science
- Food safety
- Food choice
- Food provenance

What will I study?

The course will enable you to:

- Demonstrate effective and safe cooking skills by planning, preparing and cooking using a variety of food commodities, cooking techniques and equipment.
- Develop knowledge and understanding of the functional properties and chemical processes as well as the nutritional content of food and drinks.
- Understand the relationship between diet, nutrition and health, including the physiological and psychological effects of poor diet and health.
- Understand the economic, environmental, ethical and socio-cultural influences on food availability, production processes, and diet and health choices
- Demonstrate knowledge and understanding of functional and nutritional properties, sensory qualities and microbiological food safety considerations when preparing, processing, storing, cooking and serving food.

‘The most powerful social media? It is not the internet, it is not Facebook - it is food. This connects all human beings.’

ALEX ATALA

- Understand and explore a range of ingredients and processes from different culinary traditions to inspire new ideas and modify existing recipes.

How will I be assessed?

■ WRITTEN EXAM:

1 hour 45 mins; 100 marks; 50% of GCSE

■ COURSEWORK:

Food investigations (30 marks): written report 1500-2000 words

Food preparation (70 marks): written of electronic portfolio, 20 A3 pages

What will it give me?

Upon completion of this course, students will be qualified to go on to further study, or embark on an apprenticeship or full time career in the catering or food industries. You will also leave with a set of skills allowing you to prepare and cook a variety of healthy balanced meals.





GEOGRAPHY

Who is the course for? Geography develops understanding of people and places. This course will count towards Sixth Form entrance and covers a range of physical, human and environmental themes, ensuring students have a broad range of engaging topics to study.

Students will develop their own enquiries, form hypotheses, collect data in the field and gain a greater interest in the world around us.

What will I study?

■ PAPER 1:

Living with the Physical Environment:

the dynamic nature of physical processes and systems:

Section A: The challenge of natural hazards

- Focusing on tectonic hazards, weather hazards and climate change

Section B: The living world - Focusing on ecosystems, tropical rainforests, and hot/cold environments

Section C: Physical landscapes in the UK -

Focusing on coastal and river landscapes within the UK. Students will develop an understanding of the varying processes and features in different environments, as well as exploring the need for management strategies to ensure sustainability.

■ PAPER 2:

Challenges of the Human Environment:

human processes, systems and outcomes:

Section A: Urban issues and challenges -

Focusing on urban growth, challenges and opportunities.

Section B: The changing economic world -

Focusing on economic development, LICs and NEEs and strategies to reduce the global development gap.

Section C: The challenge of resource

management - Focusing on the importance of food, water and energy to human

development. Students will develop an understanding of the factors that produce a diverse variety of human environments.

■ PAPER 3:

Geographical Applications including

Fieldwork: a synoptic paper drawing together knowledge, skills and understanding:

Section A: Issue Evaluation - Focusing on critical thinking and problem solving whilst looking at a particular issue.

Section B: Fieldwork - Focusing on two geographical enquiries collecting primary data

How will I be assessed?

3 written exams:

Paper 1 – 1 hour 30 minutes.

Paper 2 – 1 hour 30 minutes.

Paper 3 – 1 hour 15 minutes.

■ **PAPER 1** – 88 marks (3 SPaG) **35%**

■ **PAPER 2** – 88 marks (3 SPaG) **35%**

■ **PAPER 3** – 76 marks (6 SPaG) **30%**.

100% of GCSE course

What will it give me?

Geography equips students with an extensive range of personal learning and thinking skills such as teamwork, independent enquiry and creative thinking – all highly valued by employers.

Careers that people have been employed in following the study of Geography include: Town Planning, Estate Agent, Expedition Leader, Lawyer, Conservation Manager, Armed Forces, Human Rights Officer.



WORLD
WAR



OPTIONAL COURSE

HISTORY

Who is the course for? History is a subject for curious students with enquiring minds. It teaches us how and why things happen.

There is not one history, but many versions, and as a history student, you will build up a picture of the past, and become skilled at interpreting the evidence that has been left behind. You will develop empathy and understanding of the lives of others as you study a wide variety of cultures and societies different to our own.

Historians develop an understanding of the context and chronology of events in the past. They evaluate the causes and consequences of change and how it has been experienced, promoted, shaped or resisted by different people and at different times. They analyse the significance of events, and become skilled in arguing, reasoning, discussion, and critical analysis. They are often effective communicators, with strong research, interpersonal, organisational, analytical and intellectual skills.

What will I study?

PAPER 1:

Thematic study and historic environment:

- Crime and Punishment in Britain, c1000 – present
- Whitechapel, c1870-c1900: crime, policing and the inner city

PAPER 2:

Period study and British depth study:

- Early Elizabethan England, 1558-88
- Superpower relations and the Cold War, 1941–91

PAPER 3: Modern depth study:

- Weimar and Nazi Germany, 1918-39

**'We are not makers of history.
We are made by history.'**

MARTIN LUTHER KING

How will I be assessed?

- **PAPER 1** – 1 hour 15 minutes – 52marks (4 SPAG) – **30%**.
- **PAPER 2** – 1 hour 45 minutes – 64 marks – **40%**.
- **PAPER 3** – 1 hour 20 minutes – 52 marks (4 SPAG) – **30%**.

What will it give me?

After completing their education, historians often chose to work in law, politics, business, journalism, research, teaching and academia. You will also find them working in galleries, museums, archives and libraries.

Notable historians include documentary maker Louis Theroux, singer Chris Martin, politician Gordon Brown, and founder of the Body Shop Anita Roddick.





sin



COMPULSORY SUBJECT

MATHS

Who is the course for? All students will study the GCSE Mathematics course at either Foundation (Grades 1-5) or Higher (Grades 4-9) Tier, with a final decision being made on the tier of entry when students are in Year 11.

The aims and objectives of the Edexcel GCSE (9–1) in Mathematics are to enable students to:

- develop fluent knowledge, skills and understanding of mathematical methods and concepts
- acquire, select and apply mathematical techniques to solve problems
- reason mathematically, make deductions and inferences, and draw conclusions
- comprehend, interpret and communicate mathematical information in a variety of forms appropriate to the information and context

What will I study?

The assessments will cover the following content headings:

Number

- Structure and Calculation
- Fractions, Decimals and Percentages
- Measures and Accuracy

Algebra

- Notation, vocabulary and manipulation
- Graphs
- Solving equations and inequalities
- Sequences

Ratio, proportion and rates of change

Geometry and measures

- Properties and constructions
- Mensuration and calculation Vectors

Probability

Statistics

How will I be assessed?

- 3 written exams at either foundation or higher tier
- Each exam is 1 hour 30 minutes
- 2 calculator exams, 1 non-calculator exam
- 80 marks on each paper

What will it give me?

Alongside financial skills required in everyday life, a GCSE in Maths enables you to demonstrate to employers analytical, problem solving and reasoning skills. It is highly probable that whichever career path you decide to follow, there will be a number of GCSE mathematics topics, which you will use and develop further.

If you wish to study Maths or a science based courses at A-Level, success in this course is vital.

‘In order to understand the universe you must know the language in which it is written and that language is mathematics.’

GALILEO GALILEI





OPTIONAL COURSE

MEDIA STUDIES

Who is the course for? This GCSE promises to engage students in critical thinking. It encourages students to question the media that surrounds them, enabling students to become media confident, media literate and potentially media makers. The course offers students real world, professional examples of how and why media products are made.

We are surrounded by media wherever we look. The internet alone provides us with unbelievable access to the world around us, including new ways of communicating through social media and gaming. TV, film, radio, magazines, papers... the list goes on. Not only is Media Studies interesting and relevant, it gives you valuable skills to help understand the world around you.

What will I study?

GCSE Media studies is taught in four main areas known as the Theoretical Framework. The four areas are: Media Language, Representation, Industry and Audience. Students will be awarded grades based on two exam papers and one coursework module.

Working towards the two exams, students study 'set products' covering a range of media forms such as advertising, newspapers, online newspapers, TV, film, film websites, music videos, gaming and radio. Set products are subject to exam board updates, however as of

Feb 2024 they include but are not limited to: The James Bond franchise and *No Time to Die* (film), *The Sun* and *The Guardian* Newspapers (newspapers), Fortnite (gaming), *The Archers* (radio), Taylor Swift (music videos), *Luther* (TV).

How will I be assessed?

■ Exploring the Media

(Examination: 40% of the course)

■ Understanding Media Forms and Products

(Examination: 30% of the course)

■ Creating Media Products

(Coursework: 35% of the course) Students will research, plan and deliver a detailed media project responding to a brief set by the exam board. In previous years briefs have included designing a film DVD cover in the style of a specific film genre, and a targeted magazine front cover and insert pages in the style of a specific genre.

What will it give me?

The confidence to critique everything. The ability to look, and look again at the media around us and ask all important questions about the people behind the media product and their intention. Studying Media Studies opens up opportunities to go into a number of exciting careers as marketing, business and production of a multitude of different products. It will harness practical skills of project planning and delivery, as well as academic writing skills to communicate detailed understanding of exam set products.

'The media is the most powerful entity on earth.'

MALCOLM X





OPTIONAL COURSE

MUSIC

Who is the course for? The GCSE covers a range of genres of music ranging from European classical and musicals through to popular music and world music.

This ensures students have a wide variety of different styles to explore. Students will be challenged with different techniques and approaches to composition and performance, enabling them to develop their own unique style of musicianship.

They will learn how to produce their own work and different methods of recording using technology. Students will also gain an appreciation, through listening, of how different times and cultures view and use music. They will develop analytical and critical thinking skills as they study the set works and apply this to their own compositions and performances. All these will help prepare them for further study.

What will I study?

The course consists of 3 components:

■ **PERFORMANCE 30%:** Students will be required to perform a solo and an ensemble piece. This can be recorded at any time during the course, giving each student the chance to produce the best quality pieces.

■ **COMPOSITION 30%:** Students will compose 2 pieces of music. The first piece will be from a brief set by the exam board, and the second will be a free-style piece. These will both be recorded with a relevant score.

■ **LISTENING 40%:** Students will study pieces set by the board which focus on classical instrumental music, vocal music, music for stage and screen and fusions. They will also focus on musical language and aural recognition.

‘Without music, life would be a mistake.’

FRIEDRICH NITZSCHE

How will I be assessed?

■ **Written exam:** 1 hour 45 minutes (80 marks)

■ **Recorded solo and ensemble performance:** sent to examiners (60 marks)

■ **Recorded compositions and scores:** sent to examiners (60 marks)

What will it give me?

This course is perfect preparation for any further music courses as it develops the skills of knowledge, understanding, explanation, analysis and evaluation alongside a practical and technical element.

Employers and educators today consider Music an important and valuable qualification as it provides students with determination to succeed, discipline and the ability to be creative and communicate. It is also important socially and very much connected to our well-being and quality of life.



OPTIONAL COURSE

PHOTOGRAPHY

Who is the course for? Photography is for students who enjoy taking creative images but who want to learn the techniques required to achieve this.

The photography course is very similar to Art GCSE. You will be required to research photographers and develop your own ideas. This course is ideal for hardworking individuals who are expected to use their own time each week as well as lessons completing their coursework.

What will I study?

Students will learn photographic techniques and processes, for example: lighting, viewpoint, aperture, depth of field, shutter speed and movement, digital media, and editing software.

You will be completing projects under different themes and will need to understand how to record ideas, develop and refine techniques using photography as a tool towards a final outcome. You will be taught a variety of skills in using digital photography and various types of software, including Photoshop. Sections of the course allow you to learn about contemporary photographers as well as the history of photography. An element of the course involves analysing and writing about your own work, and the work of other photographers or artists.

To support coursework and exam themes visits are made to several Galleries and relevant exhibitions to gather research and ideas. Coursework and exam preparation are completed in class as well as at home. You are expected to meet all coursework deadlines.

■ **IN COMPONENT 1 (portfolio)** students develop responses to initial starting points, project briefs or specified tasks and realise intentions informed by research, the development and refinement of ideas and

meaningful engagement with selected sources. Responses will include evidence of drawing for different purposes and needs and written annotation.

■ **IN COMPONENT 2 (externally set assignment)** students respond to a starting point provided by AQA. This response provides evidence of the student's ability to work independently within specified time constraints, realise intentions that are personal and meaningful and explicitly address the requirements of all four assessment objectives.

How will I be assessed?

- **COMPONENT 1:** Coursework: 60% of grade
- **COMPONENT 2:** Externally set assignment: 40% of grade

What will it give me?

This course is perfect preparation for further studies at A Level. A level courses in Photography build on knowledge acquired at GCSE and prepare you for studying at university.

- Possible degree options: Animation
- Commercial photography
- Creative and editorial photography
- Digital media
- Fashion photography
- Film and television
- Film and visual culture
- Forensic photography
- Graphics with photography
- Medical photography
- Visual communication

'You don't take a photograph, you make it.'

ANSEL ADAMS





PHYSICAL EDUCATION

Non-Examined All students at Turing House School will aim to meet the Department for Education guidance of 90 minutes physical activity a week.

Physical activity is at the heart of a healthy lifestyle. Lifestyle changes that come with computer games and mobile technology mean that society is becoming more and more sedentary, so much so that obesity and heart disease are on the rise. Exercise is a vital part of ensuring positive physical and mental health. Therefore all students in Years 10 and 11 will follow a core PE programme which is compulsory.

What will I study?

As in previous years, students will cover 6 units over the academic year in both Years 10 and 11. Facilities permitting, we be offering a range of games and physical activities to promote mental, social and physical well-being.

How will I be assessed?

Assessment will occur in the same way it has done at KS3, with GCSE levelled assessments at the end of each unit. These grades are to track performance and progress, but will not contribute to a qualification.

What will it give me?

Exercising regularly can improve your mood and reduce feelings of anxiety and depression. Exercise is crucial to supporting a fast metabolism and burning more calories per day. It also helps you maintain muscle mass and control weight.

Physical activity enables you to build muscles and strong bones. It may also help prevent osteoporosis. Engaging in regular physical activity can increase your energy

‘True enjoyment comes from activity of the mind and exercise of the body; the two are ever united.’

WILHELM VON HUMBOLDT

levels. This is true even in people with persistent fatigue and those suffering from serious illnesses. Daily physical activity is essential to maintaining a healthy weight and reducing the risk of chronic disease. Moderate exercise can provide antioxidant protection and promote blood flow, which can protect your skin and delay signs of aging.

Regular exercise improves blood flow to the brain and helps brain health and memory. Regular physical activity, regardless of whether it is aerobic or a combination of aerobic and resistance training, can help you sleep better and feel more energised during the day. Exercise has favourable effects on the pain that’s associated with various conditions. It can also increase pain tolerance.





POLITICS & CITIZENSHIP

Who is the course for? Politics and Citizenship Studies is for students that want to explore how citizenship impacts upon life in a local and global sense.

Students will reflect on and debate current issues that impact modern society, and discover how to become an informed and active citizen, engaging with a topic close to your heart.

What will I study?

The course content is divided into five themes:

- Living together in the UK
- Democracy at work in the UK
- Law and justice
- Power and influence
- Taking citizenship action

All five areas aim at addressing the questions below.

- How have UK communities developed?
- What is identity?
- What is democracy and how does it work?
- Who runs the country?
- How does Parliament work?
- How is money managed?
- What is the law and how does it impact us?
- How does the justice system work?
- Is crime increasing in society?
- What power and influence can citizens have?
- What role and influence does the media have?
- How can I take citizenship action?

**‘Politics is everywhere...
it is in your shirt... in your
pants... everywhere.’**

RAHUL GANDHI

How will I be assessed?

There are two written examinations each 1 hour and 45 minutes long.

■ **PAPER 1:** 80 marks

■ **PAPER 2:** 80 marks

Each paper consists of a mixture of different question styles, including multiple-choice questions, short-answer questions and extended open response questions.

What will it give me?

The Political Studies Association (PSA) promotes the study of politics as a useful tool not only for future education and employment but as a vital component for living in our current society.

This qualification in politics prepares students for many forms of employment as well as further study. You will gain many analytical and practical skills including the ability to conduct research, oral and written communication and IT, all of which are invaluable in today's employment market.



CORE SUBJECT



PSHCE (Personal, Social, Health & Citizenship Education)

Non-Examined PSHCE gives students the knowledge, skills, and attributes they need to keep themselves healthy and safe and to prepare them for life and work in modern Britain.

Statutory relationships and sex education is taught through PSHCE at Turing House School.

Personal, Social, Health and Citizenship Education (PSHCE) is a subject through which students develop the knowledge, skills and attributes they need to manage their lives, now and in the future.

These skills and attributes help students to stay healthy, safe and prepare them for life and work in modern Britain. PSHCE helps students to achieve their academic potential, and leave school equipped with skills they will need throughout later life.

PSHCE fosters the knowledge, skills and attributes that a student needs to thrive as an individual, as a family member and as a member of society. From making responsible decisions about alcohol to succeeding in a job, PSHCE helps students to manage many of the most critical opportunities, challenges and responsibilities they will face growing up.

In 2015, the UK Youth Parliament made 'A Curriculum which prepares us for Life' a top priority, based on a consultation of almost a

million young people. This was the third year in a row that PSHCE has been voted a priority by young people. PSHCE is supported by leading youth bodies such as Girlguiding and the British Youth Council.

What will I study?

As in previous years, students will cover 6 units over the academic year in both Years 10 and 11.

- Careers
- Relationships with others
- Finance
- Staying Safe
- World of Work
- Healthy Lifestyles
- Poverty & Wealth
- RSE Conflict
- Parenting and Pregnancy
- Study skills
- Seven habits of highly effective teens

What will it give me?

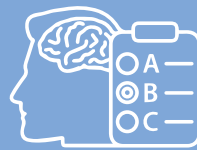
A growing body of research shows that students who are emotionally healthy do better at school.

PSHCE helps children and young people to achieve their potential by supporting their wellbeing and tackling issues that can affect their ability to learn, such as anxiety and unhealthy relationships.

PSHCE also helps students to develop skills and aptitudes - like teamwork, communication, and resilience - that are crucial to navigating the challenges and opportunities of the modern world, and are increasingly valued by employers.

'Life isn't about finding yourself. Life is about creating yourself.'

GEORGE BERNARD SHAW



PSYCHOLOGY

Who is the course for? This engaging qualification introduces students to the fundamentals of psychology, developing knowledge and understanding of human thinking and behaviour.

What will I study?

The course covers the following major areas of human psychology:

- **Social influence** - Why do people obey? How can one person bring about social change?
- **Cognitive development** - Why do optical illusions work? Does your brain play tricks on you?
- **Memory** - How do we remember friends from years ago, but we struggle to remember phone numbers?
- **Biopsychology** - Does our biology control who we are? Are criminals born or are they made?
- **Psychopathology**
- **Research methods** - How do psychologists design research? How do they carry out experiments?

In order to develop skills, knowledge and understanding in psychology, students need to be proficient in Maths. Students will be required to use a range of mathematical skills relevant to research methods. Students also need to be able to write essays to demonstrate their ability to apply their knowledge of psychology to the real world.

‘Psychology marks the triumph of human evolution. How many other species need a science of the mind?’

ISAAC ASIMOV

(Professor, Boston University)

How will I be assessed?

Assessments use extended writing/essays to assess knowledge, understanding, application and evaluation skills. In addition, there are multiple choice and short answer questions. Knowledge of research methods is gained through classroom experience of practical psychology which is then assessed using scenario-based questions.

There are two examination papers at the end of Yr 11.

- **PAPER 1** is 1 hour 45 minutes
- **PAPER 2** is 1 hour and 45 minutes

What will it give me?

The qualification provides a starting point for a route into employment in areas such as forensic (crime) psychology, business: human resources, advertising, counselling and therapies, sport psychology, nursing, clinical psychology. It offers a pathway into studying A Level Psychology in the sixth form.



COMPULSORY SUBJECT

RELIGION & PHILOSOPHY

Who is the course for? All students will study the GCSE Religion & Philosophy Short Course. This course will count towards Sixth Form entrance and is simply half the number of units as the full course.

The GCSE covers a range of religions, and philosophical and ethical themes, ensuring students have a variety of intriguing subjects to explore.

Students will be challenged with questions about belief, values, meaning, purpose and truth, enabling them to develop their own values and attitudes towards religious issues.

Students will also gain an appreciation of how religion, philosophy and ethics form the basis of our culture. They will develop analytical and critical thinking skills, the ability to work with abstract ideas, leadership and research skills. All these will help prepare them for further study.

What will I study?

SECTION A: The study of religions: beliefs and teachings of two religions from the following:

■ **Christianity & Islam** - Students will examine key beliefs in both religions. Students should study the influence of the beliefs and teachings studied on individuals, communities and societies. Students will also examine sources of authority and wisdom and their impact on beliefs.

SECTION B: Thematic studies: religious, philosophical and ethical studies:

■ **Theme A: Relationships and families** - Focusing on relationships and families in modern society, sex, marriage and divorce and gender issues

■ **Theme B: Religion, peace and conflict** - Focusing on violence, terrorism, war, peace, war in the 21st century and victims of war.

How will I be assessed?

Written exam: 1 hour 45 minutes 96 marks; (plus 5 marks for spelling, grammar and specialist terminology)

100% of GCSE Short course.

What will it give me?

This course is perfect preparation for any written A level course that requires the skills of knowledge, understanding, explanation, analysis and evaluation. This in turn is perfect grounding for any similar degree course. Employers and educators today consider Religion & Philosophy an important and valuable qualification as it provides students with vital life-skills. Religion & Philosophy is a great qualification for any job that involves working with people, as it helps you to understand people and why they act in the way they do.

‘Rivers, ponds, lakes and streams - they all have different names, but they all contain water. Just as religions do - they all contain truths.’

MUHAMMAD ALI





COMPULSORY SUBJECT

SCIENCE

Who is the course for? All students will either study 'Trilogy' (Combined Science, 2 grades) or 'Separate Science' (Triple Science, 3 grades – Biology, Chemistry and Physics). Both Science courses will be co-taught during Year 9.

Based on prior performance students will be directed to the most appropriate course. GCSE Science allows students to acquire scientific knowledge and facts, and an understanding of scientific concepts, principles, themes and patterns.

Students will also develop experimental skills based on correct and safe laboratory techniques, form hypotheses and design experiments to test them.

All students will develop an enjoyment of, and interest in, the scientific world and be able to apply learning to real-life applications of science.

What will I study?

Students will study all three Sciences for both Trilogy and Separate Sciences.

The following topics will be studied:

■ **Biology:** - Cell Biology; Organisation; Infection and response; Bioenergetics; Homeostasis and response; Inheritance, variation and evolution; Ecology

■ **Chemistry:** - Atomic structure and the periodic table; Bonding, structure, and the properties of matter; Quantitative chemistry; Chemical changes; Energy changes; The rate and extent of chemical change; Organic chemistry; Chemical analysis; Chemistry of the atmosphere; Using resources

■ **Physics:** - Energy; Electricity; Particle model of matter; Atomic structure; Forces; Waves; Magnetism and electromagnetism
Students studying the Separate Science course will study the above content in greater depth plus an additional unit on space.

'The whole of science is nothing more than a refinement of everyday thinking.'

ALBERT EINSTEIN

How will I be assessed?

For both Trilogy and Separate Sciences there are six papers:

■ **Biology** – Paper 1 & Paper 2

■ **Chemistry** – Paper 1 & Paper 2

■ **Physics** – Paper 1 & Paper 2

Each exam is a written paper with: multiple choice, structured, closed short answer, and open response. (1 hour 15 minutes for Trilogy, 1 hour 45 minutes for Separate Sciences)

What will it give me?

A vast number of careers require a knowledge of Science including: doctor, vet, physiotherapist, chemist, beautician, architect, surveyor, engineer, farmer, sports trainer.

There are thousands of other careers for which Science will be similarly essential; the practical, analytical and evaluative skills gained, are highly desirable in many professions.

In order to access A level courses in Biology, Chemistry, Physics and other science-related subjects, success in this course is vital.





SPANISH

Who is the course for? We believe languages should be accessible for all students. The new Pearson Edexcel Level 1/Level 2 GCSE (9–1) in Spanish has been developed to help students of all abilities progress and develop a passion for languages, through culturally engaging content.

Around the world Spanish is spoken as a native language by 406 million people, which makes it second only to Mandarin. Spanish is the official language of 21 countries, and it is the second most spoken language in America, with up to 47% of the population speaking it in some states. By 2050, ten percent of the world's population will speak Spanish.

If you learn Spanish you will also have a major advantage when trying to understand/learn any other Latin-based language such as Portuguese or Italian, so it's great for people who like to travel.

What will I study?

The Pearson Edexcel Level 1/Level 2 GCSE (9-1) in Spanish consists of four externally examined papers based on the following skills: listening, speaking, reading and writing.

Questions across all four language skills are set in common contexts, addressing a range of relevant contemporary and cultural themes. They are organised into five themes, each broken down into topics and sub-topics.

The five themes are:

- **Identity and culture**
- **Local area, holiday and travel**
- **School**
- **Future aspirations, study and work**
- **International and global dimension**

All themes and topics will be studied in the context of both the students' home country and that of countries and communities where Spanish is spoken.

How will I be assessed?

- **PAPER 1: Listening and understanding in Spanish** (45min- 25% of the qualification)
- **PAPER 2: Speaking in Spanish** (10-12min -25% of the qualification)
- **PAPER 3: Reading and understanding in Spanish** (1hr -25% of the qualification)
- **PAPER 4: Writing in Spanish** (1hr 20min- of the qualification)

What will it give me?

This course is perfect to prepare you for Spanish A level course.

Languages can lead to many different and varied jobs – it is not all about teaching and translating. An A-Level in a language shows universities and employers that you are prepared to work hard to learn grammar and vocabulary, but that you also have lots of other skills like independent thinking, the ability to argue points and discuss ideas, that you can listen and that you can verbalise ideas.

'If you talk to a man in a language he understands, that goes to his head. If you talk to him in his own language, that goes to his heart.'

NELSON MANDELA



OPTIONAL COURSE

SPORT STUDIES LEVEL 1/2

Who is the course for? Are you motivated, organised, interested in all aspects of sport, not just playing? Do you want to pursue a career in the sports industry and to gain a qualification in sport?

If so, the Cambridge National Level 1/2 certificate in Sport is a fantastic opportunity to gain a vocational qualification equivalent to one GCSE. The course extends the knowledge gained at KS3 Physical Education.

The qualification will help to prepare learners for appropriate employment in the sport sector and it is suitable for those who enjoyed Sport at KS3 level. Sport Studies will help you to succeed in your future career and is designed to give flexibility as there are a range of units covered. Every year the Sport and Active leisure sector outperforms the rest of the UK economy and as a result the opportunities within this sector are more varied than ever before.

The vocational course is predominately made up of practical and theory coursework, with one examination, making it the perfect qualification for those students who perform well practically.

What will I study?

The course is made up of a variety of units and carries the same weight as one GCSE. The Cambridge National Level 1/2 certificate in Sport Studies consists of 4 units.

- **Contemporary Issues in Sport** (Exam)
- **Developing Sport Skills** (Coursework)
- **Sport Leadership** (Coursework)
- **Developing knowledge and skills in outdoor activities** (Coursework)

'I've missed more than 9000 shots in my career. I've lost almost 300 games. 26 times, I've been trusted to take the game winning shot and missed. I've failed over and over and over again in my life. And that is why I succeed.'

MICHAEL JORDAN

How will I be assessed?

In each of the units studied you will be assessed through a variety of assignments, tasks and exams which will include coursework, evaluations, presentations, examinations, practical demonstrations of your skills and knowledge and leading sports sessions, running events and competitions.

Each unit has criteria from Pass, Merit and Distinction which you will need to meet to attain your desired grade.

What will it give me?

This course will assist you in furthering your education e.g. A levels, BTEC Nationals, Cambridge Technical's and degree courses and provide a starting point for a route to employment into many diverse areas of sport. These may include coaching, teaching, sports journalism, sports engineering, physiotherapy and sports management.



OPTIONAL COURSE

TRAVEL & TOURISM (BTEC)

Who is the course for? BTEC First Travel and Tourism is a practical and interesting way to learn and develop the skills needed to work in the travel industry.

As part of our learning we will understand the different travel and tourist destinations and investigate the appeal of UK tourist destinations.

We will also develop business and customer awareness by understanding the importance of customer services to travel and tourism organisations.

What will I study?

The course has core and optional specialist units. Learners must complete the three core units and one optional unit to reach a total of 120 GLH.

Topics covered include:

- **UNIT 1: The UK Travel and Tourism Sector**
(Externally assessed)
- **UNIT 2: UK Travel and Tourism Destinations** (Internally assessed)
- **UNIT 3: The Travel and Tourism Customer Experience** (Internally assessed)
- **UNIT 4: International Travel and Tourism Destinations** or
- **UNIT 5: Factors Affecting Worldwide Travel and Tourism** (Internally assessed).

How will I be assessed?

This BTEC Award has units that your centre assesses (internal) and one exam unit that Edexcel delivers through an online test (external). Pupils **MUST** pass the exam at Level 2 Pass or above in order to achieve a Level 2 Pass or above overall. Each unit comprises Level 1, Level 2 Pass, Level 2 Merit and Level 2 Distinction tasks which build up to form a portfolio of work.

Homework will be set every week to

support the work being carried out in lessons and it is an expectation that this will be completed. This will vary in style from examination questions to attendance at support sessions to complete coursework and/or improve work to exceed target grades.

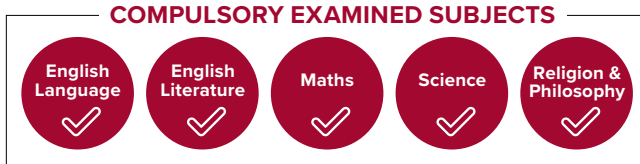
What will it give me?

A BTEC in Travel and Tourism will assist you in furthering your education, e.g. A Levels, BTEC Level 3 and apprenticeships. The course also provides the starting point for a route to employment into many diverse areas of travel, including roles in the tourism sector, such as holiday representatives or travel agent.

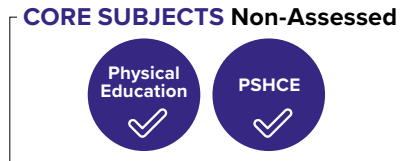
‘Once the travel bug bites there is no known anti-dote, and I know that I shall be happily infected until the end of my life.’

MICHAEL PALIN

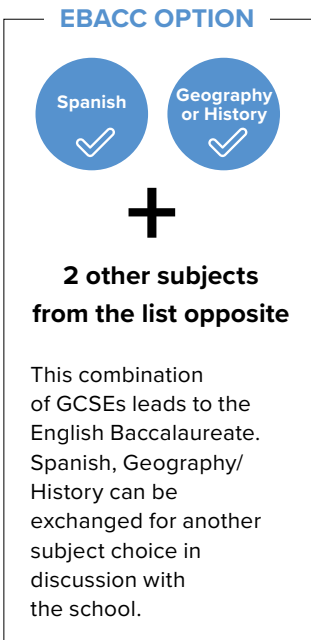
Below is a simple schematic to show the choices that a student has that have been described in detail in the opening pages. All students must study the **compulsory examined subjects** and **core subjects**. Then there are different paths they can follow by choosing their other subjects.



+



+



or

